

## Koi Delta 8

Sample ID: 2106ELA0573.1927  
Strain: Mango  
Matrix: Ingestible  
Type: Tincture  
Sample Size: ; Batch:

Manufactured: N/A  
Collected:  
Received: 06/30/2021  
Completed: 07/07/2021  
Batch#:

Client  
**Real Tested CBD**  
Lic. #  
1 Pelican Point  
Newport Coast, CA 92657



### Summary

Test	Date Tested	Result
Batch		Pass
Cannabinoids	07/02/2021	Complete
Residual Solvents	07/02/2021	Pass
Pesticides	07/02/2021	Pass

### Cannabinoids

Complete

<b>1.7725 mg/serving</b>	<b>ND</b>	<b>21.0085 mg/serving</b>
Total THC	Total CBD	Total Cannabinoids

Analyte	LOD	LOQ	Result	Result	Result
	mg/g	mg/g	%	mg/g	mg/package
THCa	0.008000	0.2000	ND	ND	ND
Δ9-THC	0.016000	0.2000	0.3756	3.756	106.3474
Δ8-THC	0.011000	0.2000	4.0440	40.440	1145.0182
THCV	0.018000	0.2000	ND	ND	ND
CBDa	0.009000	0.2000	ND	ND	ND
CBD	0.022000	0.2000	ND	ND	ND
CBDV	0.016000	0.2000	ND	ND	ND
CBN	0.008000	0.2000	0.0323	0.323	9.1454
CBGa	0.015000	0.2000	ND	ND	ND
CBG	0.015000	0.2000	ND	ND	ND
CBC	0.012000	0.2000	ND	ND	ND
Δ10-THC	0.022000	0.2000	ND	ND	ND
<b>Total THC</b>			<b>0.3756</b>	<b>3.7560</b>	<b>106.3474</b>
<b>Total CBD</b>			<b>&lt;LOQ</b>	<b>&lt;LOQ</b>	<b>&lt;LOQ</b>
<b>Total</b>			<b>4.4519</b>	<b>44.519</b>	<b>1260.5110</b>

1 Unit = 0.5 mL Tincture, 0.4719g. 1 mL = 0.9438g. 1 unit(s) per serving. 60 serving(s) per package.

Cannabinoids analysis by SOP LAB-001 utilizing High Performance Liquid Chromatography-Diode Array Detection (HPLC-DAD). Total THC = THCa \* 0.877 + d9-THC; Total CBD = CBDa \* 0.877 + CBD. LOQ = Limit of Quantitation. LOD = Limit of Detection. ND = Not Detected. If moisture content is tested and reported, the cannabinoid results are reported normalized to dry weight.



*Jonathan Yang*  
Jonathan Yang  
Reporting Analyst  
07/07/2021

Confident Cannabis  
All Rights Reserved  
support@confidentcannabis.com  
(866) 506-5866  
www.confidentcannabis.com



Sample collection for laboratory testing was performed in accordance with BCC's regulations, 16 CCR section 5705, effective 01/2019. Foreign material analysis by SOP LAB-008 utilizing visual examination and optical microscopy. Water activity measurement by SOP LAB-010 utilizing chilled-mirror dew point analysis. Moisture content measurement by SOP LAB-009 utilizing thermogravimetric analysis. This product has been tested by Earth Labs, LLC using valid testing methodologies and quality system as required by state law. All LQC samples were performed and met the acceptance criteria, pursuant to 16 CCR section 5730. Values reported relate only to the product tested. Earth Labs, LLC makes no claims as to the efficacy, safety or other risks associated with any detected or non-detected levels of any compounds reported herein. This Certificate shall not be reproduced except in full, without the written approval of Earth Labs, LLC.

## Koi Delta 8

Sample ID: 2106ELA0573.1927

Strain: Mango

Matrix: Ingestible

Type: Tincture

Sample Size: ; Batch:

Manufactured: N/A

Collected:

Received: 06/30/2021

Completed: 07/07/2021

Batch#:

Client

Real Tested CBD

Lic. #

1 Pelican Point

Newport Coast, CA 92657

## Residual Pesticides

Pass

Analyte	LOD	LOQ	Limit	Result	Status	Analyte	LOD	LOQ	Limit	Result	Status
	µg/g	µg/g	µg/g	µg/g			µg/g	µg/g	µg/g	µg/g	
Abamectin	0.022	0.066	0.3	ND	Pass	Fludioxonil	0.015	0.046	30	ND	Pass
Acephate	0.004	0.012	5	ND	Pass	Hexythiazox	0.007	0.021	2	ND	Pass
Acequinocyl	0.015	0.044	4	ND	Pass	Imazalil	0.029	0.086	0.029	ND	Pass
Acetamiprid	0.005	0.015	5	ND	Pass	Imidacloprid	0.008	0.024	3	ND	Pass
Aldicarb	0.025	0.074	0.025	ND	Pass	Kresoxim Methyl	0.025	0.074	1	ND	Pass
Azoxystrobin	0.009	0.028	40	ND	Pass	Malathion	0.028	0.084	5	ND	Pass
Bifenazate	0.005	0.014	5	ND	Pass	Metalaxyl	0.026	0.079	15	ND	Pass
Bifenthrin	0.022	0.066	0.5	ND	Pass	Methiocarb	0.031	0.093	0.031	ND	Pass
Boscalid	0.014	0.042	10	ND	Pass	Methomyl	0.031	0.093	0.1	ND	Pass
Captan	0.21	0.593	5	ND	Pass	Mevinphos	0.01	0.031	0.01	ND	Pass
Carbaryl	0.009	0.027	0.5	ND	Pass	Myclobutanil	0.017	0.052	9	ND	Pass
Carbofuran	0.018	0.054	0.018	ND	Pass	Naled	0.027	0.081	0.5	ND	Pass
Chlorantraniliprole	0.03	0.09	40	ND	Pass	Oxamyl	0.014	0.042	0.2	ND	Pass
Chlordane	0.023	0.075	0.023	ND	Pass	Pacllobutrazol	0.017	0.051	0.017	ND	Pass
Chlorfenapyr	0.007	0.022	0.007	ND	Pass	Parathion Methyl	0.011	0.033	0.011	ND	Pass
Chlorpyrifos	0.018	0.054	0.018	ND	Pass	Pentachloronitrobenzene	0.025	0.079	0.2	ND	Pass
Clofentezine	0.025	0.075	0.5	ND	Pass	Permethrin	0.087	0.26	20	ND	Pass
Coumaphos	0.02	0.06	0.02	ND	Pass	Phosmet	0.02	0.06	0.2	ND	Pass
Cyfluthrin	0.158	0.475	1	ND	Pass	Piperonyl Butoxide	0.021	0.063	8	ND	Pass
Cypermethrin	0.037	0.111	1	ND	Pass	Prallethrin	0.026	0.078	0.4	ND	Pass
Daminozide	0.01	0.03	0.01	ND	Pass	Propiconazole	0.029	0.088	20	ND	Pass
Diazinon	0.008	0.024	0.2	ND	Pass	Propoxur	0.03	0.089	0.03	ND	Pass
Dichlorvos	0.015	0.044	0.015	ND	Pass	Pyrethrins	0.02	0.059	1	ND	Pass
Dimethoate	0.027	0.082	0.027	ND	Pass	Pyridaben	0.006	0.018	3	ND	Pass
Dimethomorph	0.016	0.048	20	ND	Pass	Spinetoram	0.019	0.056	3	ND	Pass
Ethoprophos	0.018	0.055	0.018	ND	Pass	Spinosad	0.011	0.034	3	ND	Pass
Etofenprox	0.013	0.038	0.013	ND	Pass	Spiromesifen	0.019	0.057	12	ND	Pass
Etoazole	0.029	0.088	1.5	ND	Pass	Spirotetramat	0.031	0.094	13	ND	Pass
Fenhexamid	0.019	0.058	10	ND	Pass	Spiroxamine	0.02	0.061	0.02	ND	Pass
Fenoxycarb	0.031	0.092	0.031	ND	Pass	Tebuconazole	0.008	0.025	2	ND	Pass
Fenpyroximate	0.01	0.03	2	ND	Pass	Thiacloprid	0.016	0.048	0.016	ND	Pass
Fipronil	0.016	0.047	0.016	ND	Pass	Thiamethoxam	0.005	0.015	4.5	ND	Pass
Fonicamid	0.001	0.004	2	ND	Pass	Trifloxystrobin	0.005	0.014	30	ND	Pass

Date Tested: 07/02/2021

Pesticides analysis by SOP LAB-005 using Gas Chromatography - Mass Spectrometry - Mass Spectrometry (GC-MS/MS) and by SOP LAB-004 utilizing Liquid Chromatography - Mass Spectrometry - Mass Spectrometry (LC-MS/MS). LOQ = Limit of Quantitation. LOD = Limit of Detection. ND = Not Detected.



*Jonathan Yang*  
Jonathan Yang  
Reporting Analyst  
07/07/2021

Confident Cannabis  
All Rights Reserved  
support@confidentcannabis.com  
(866) 506-5866  
www.confidentcannabis.com



Sample collection for laboratory testing was performed in accordance with BCC's regulations, 16 CCR section 5705, effective 01/2019. Foreign material analysis by SOP LAB-008 utilizing visual examination and optical microscopy. Water activity measurement by SOP LAB-010 utilizing chilled-mirror dew point analysis. Moisture content measurement by SOP LAB-009 utilizing thermogravimetric analysis. This product has been tested by Earth Labs, LLC using valid testing methodologies and quality system as required by state law. All LQC samples were performed and met the acceptance criteria, pursuant to 16 CCR section 5730. Values reported relate only to the product tested. Earth Labs, LLC makes no claims as to the efficacy, safety or other risks associated with any detected or non-detected levels of any compounds reported herein. This Certificate shall not be reproduced except in full, without the written approval of Earth Labs, LLC.

## Koi Delta 8

<b>Sample ID: 2106ELA0573.1927</b>	Manufactured: N/A	Client
Strain: Mango	Collected:	<b>Real Tested CBD</b>
Matrix: Ingestible	Received: 06/30/2021	Lic. #
Type: Tincture	Completed: 07/07/2021	1 Pelican Point
Sample Size: ; Batch:	Batch#:	Newport Coast, CA 92657

## Residual Solvents

Analyte	LOD	LOQ	Limit	Result	Status
	µg/g	µg/g	µg/g	µg/g	
1,2-Dichloroethane	0.20	0.83	1	ND	Pass
Acetone	8.59	185.19	5000	ND	Pass
Acetonitrile	8.87	185.19	410	ND	Pass
Benzene	0.17	0.83	1	ND	Pass
Butane	8.75	370.37	5000	ND	Pass
Chloroform	0.16	0.83	1	ND	Pass
Ethanol	66.00	740.74	5000	ND	Pass
Ethyl acetate	9.48	185.19	5000	ND	Pass
Ethyl ether	9.67	185.19	5000	ND	Pass
Ethylene oxide	0.07	0.83	1	ND	Pass
Heptane	18.06	185.19	5000	ND	Pass
Isopropyl alcohol	15.05	185.19	5000	ND	Pass
Methanol	29.41	185.19	3000	ND	Pass
Methylene chloride	0.17	0.83	1	ND	Pass
Hexane	29.81	185.19	290	ND	Pass
Pentane	18.33	185.19	5000	ND	Pass
Propane	21.46	370.37	5000	ND	Pass
Toluene	9.50	185.19	890	ND	Pass
Trichloroethylene	0.15	0.83	1	ND	Pass
Total xylenes (ortho-, meta-, para-)	11.41	185.19	2170	ND	Pass

earthlabs

Date Tested: 07/02/2021  
Residual Solvents analysis by SOP LAB-003 utilizing Gas Chromatography – Flame Ionization Detection (GC-FID) and Gas Chromatography – Mass Spectrometry (GC-MS).  
LOQ = Limit of Quantitation. LOD = Limit of Detection. ND = Not Detected.



Jonathan Yang  
Reporting Analyst  
07/07/2021

Confident Cannabis  
All Rights Reserved  
support@confidentcannabis.com  
(866) 506-5866  
www.confidentcannabis.com



Sample collection for laboratory testing was performed in accordance with BCC's regulations, 16 CCR section 5705, effective 01/2019. Foreign material analysis by SOP LAB-008 utilizing visual examination and optical microscopy. Water activity measurement by SOP LAB-010 utilizing chilled-mirror dew point analysis. Moisture content measurement by SOP LAB-009 utilizing thermogravimetric analysis. This product has been tested by Earth Labs, LLC using valid testing methodologies and quality system as required by state law. All LQC samples were performed and met the acceptance criteria, pursuant to 16 CCR section 5730. Values reported relate only to the product tested. Earth Labs, LLC makes no claims as to the efficacy, safety or other risks associated with any detected or non-detected levels of any compounds reported herein. This Certificate shall not be reproduced except in full, without the written approval of Earth Labs, LLC.

## Koi Delta 8

Sample ID: 2106ELA0573.1927

Strain: Mango

Matrix: Ingestible

Type: Tincture

Sample Size: ; Batch:

Manufactured: N/A

Collected:

Received: 06/30/2021

Completed: 07/07/2021

Batch#:

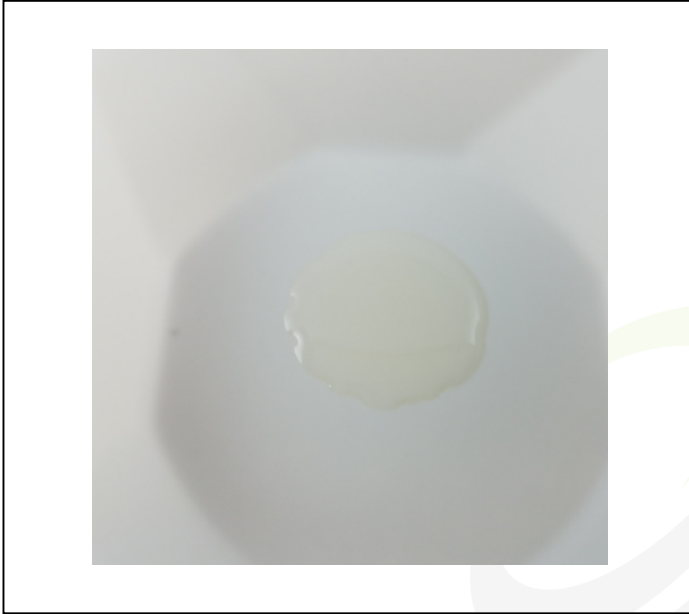
Client

**Real Tested CBD**

Lic. #

1 Pelican Point

Newport Coast, CA 92657



*Jonathan Yang*  
Jonathan Yang  
Reporting Analyst  
07/07/2021

Confident Cannabis  
All Rights Reserved  
support@confidentcannabis.com  
(866) 506-5866  
www.confidentcannabis.com



Sample collection for laboratory testing was performed in accordance with BCC's regulations, 16 CCR section 5705, effective 01/2019. Foreign material analysis by SOP LAB-008 utilizing visual examination and optical microscopy. Water activity measurement by SOP LAB-010 utilizing chilled-mirror dew point analysis. Moisture content measurement by SOP LAB-009 utilizing thermogravimetric analysis. This product has been tested by Earth Labs, LLC using valid testing methodologies and quality system as required by state law. All LQC samples were performed and met the acceptance criteria, pursuant to 16 CCR section 5730. Values reported relate only to the product tested. Earth Labs, LLC makes no claims as to the efficacy, safety or other risks associated with any detected or non-detected levels of any compounds reported herein. This Certificate shall not be reproduced except in full, without the written approval of Earth Labs, LLC.